



Real-Time Protein Titer Measurements for Bioprocessing



REDSHIFT  **Bio**
See change[®]

80 Central Street | Boxborough, MA 01719
T: 781.345.7300 | E: info@redshiftbio.com

Protein Titrers On Demand

- ▶ Protein titer correlates with off-line HPLC measurements
- ▶ Sample-to-answer in just five minutes
- ▶ Streamlined operation for ease-of-use
- ▶ No chromatography expertise required
- ▶ Sample flow path is completely contained
- ▶ Individual samples or an autosample for multi-sample automation

Accurately measure titer in five minutes using HaLCon - a purpose-built liquid chromatography system that provides actionable data quickly so you can make critical decisions in real time.

Maximize the value of every bioreactor run with HaLCon from RedShiftBio. HaLCon allows you to monitor titer by producing antibody concentration measurements, which correlate to off-line HPLC, in only five minutes. Using a compact, space-saving design, HaLCon performs a proprietary trap-and-elute technique to quantify the amount of IgG in a cell-free sample. This process delivers fast and accurate results without the need for method development or specialized training.

HaLCon is the fastest, simplest solution for protein titer measurements.

HaLCon is designed to integrate directly into your bioprocessing suite to provide real-time data without disrupting existing workflows or equipment.

When used with an automated sampling system, measurements can be obtained with a few button clicks to deliver actionable data-points so you don't have to wait for critical results.

▶ Flexible manual or automated sampling information

▶ Compact design for a small footprint

▶ Minimal connections



Titer Measurements in Four Easy Steps



Enter Information

Select a calibration curve and enter your sample information via an intuitive interface.



Load Sample

Load your sample through injection port.



Start Analysis

Simply press "Run Sample" via the interface to start your analysis.



Results in Five Minutes

Sample-to-answer in five minutes.





HALCON
Real-Time Protein
Titer Measurement
for Bioprocessing

HALCON

Integrated Reagent Pack with simple press-fit connections.

REDSHIFTBio

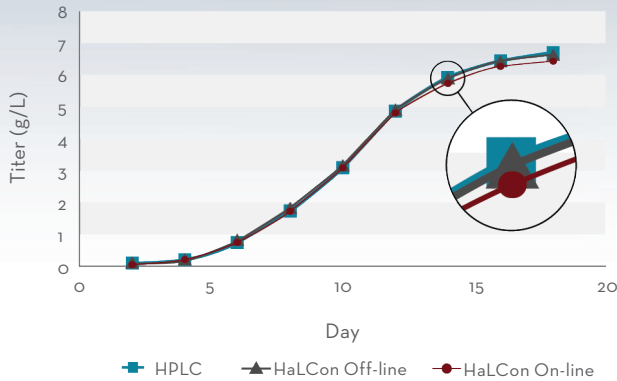
Convenient plug-and-play consumables designed to last for 1000 injections.

Sample flow path is completely contained inside the analysis module.

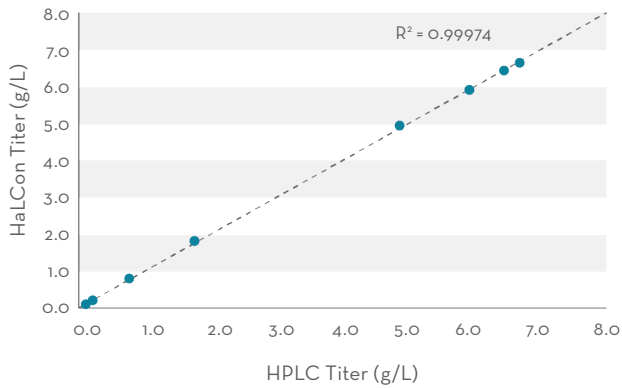
See How HaLCon Compares to HPLC

Be confident in your titer measurements with HaLCon, which delivers protein titer concentration that correlates to off-line HPLC measurements across an extraordinary dynamic range.

Simulated Cell Culture Titer



HaLCon vs HPLC Titer Correlation



HALCON PRODUCT SPECIFICATIONS

Dimensions (H x W x D)	20.5 x 9.75 x 16 in (52 x 25 x 48 cm)
Dry Weight	Approx. 30 lbs / 14 kg
Power Requirements	External 100 - 240 VAC, 50 - 60 Hz
Certifications	RoHS, REACH, CE
Reagent and Analysis Module Shelf Life	2 year shelf life / 90 days on instrument
Reagent Capacity	1,000 analyses
Analysis Time	< 5 minutes
Analyte	IgG (all subtypes)
Accuracy vs HPLC	+/- 10%
Dynamic Range	0.1 g/L - 10 g/L

HALCON ORDERING INFORMATION

Part Number	Description
BP110-0001	HaLCon Protein Analyzer, 110 VAC / 60 Hz, NA
BP210-1000	HaLCon Reagent Pack, Titer, 1,000 tests
BP310-1000	HaLCon Analysis Module, Titer, 1,000 tests

Want to know how you can use real-time titer measurements to extract the most value from every bioreactor run?

Contact our experts today:

info@redshiftbio.com

REDSHIFTBio

See change®

©2023 REDSHIFTBIO ANALYTICS

For ordering and technical support please visit redshiftbio.com/products/halcon